

MAP 10: AQUIFER RECHARGE
AND PRIORITY RESOURCE
CAUTION AREAS
CITY OF BUNNELL
2030 COMPREHENSIVE PLAN
FUTURE LAND USE ELEMENT

1 INCH EQUALS 2.25 MILES



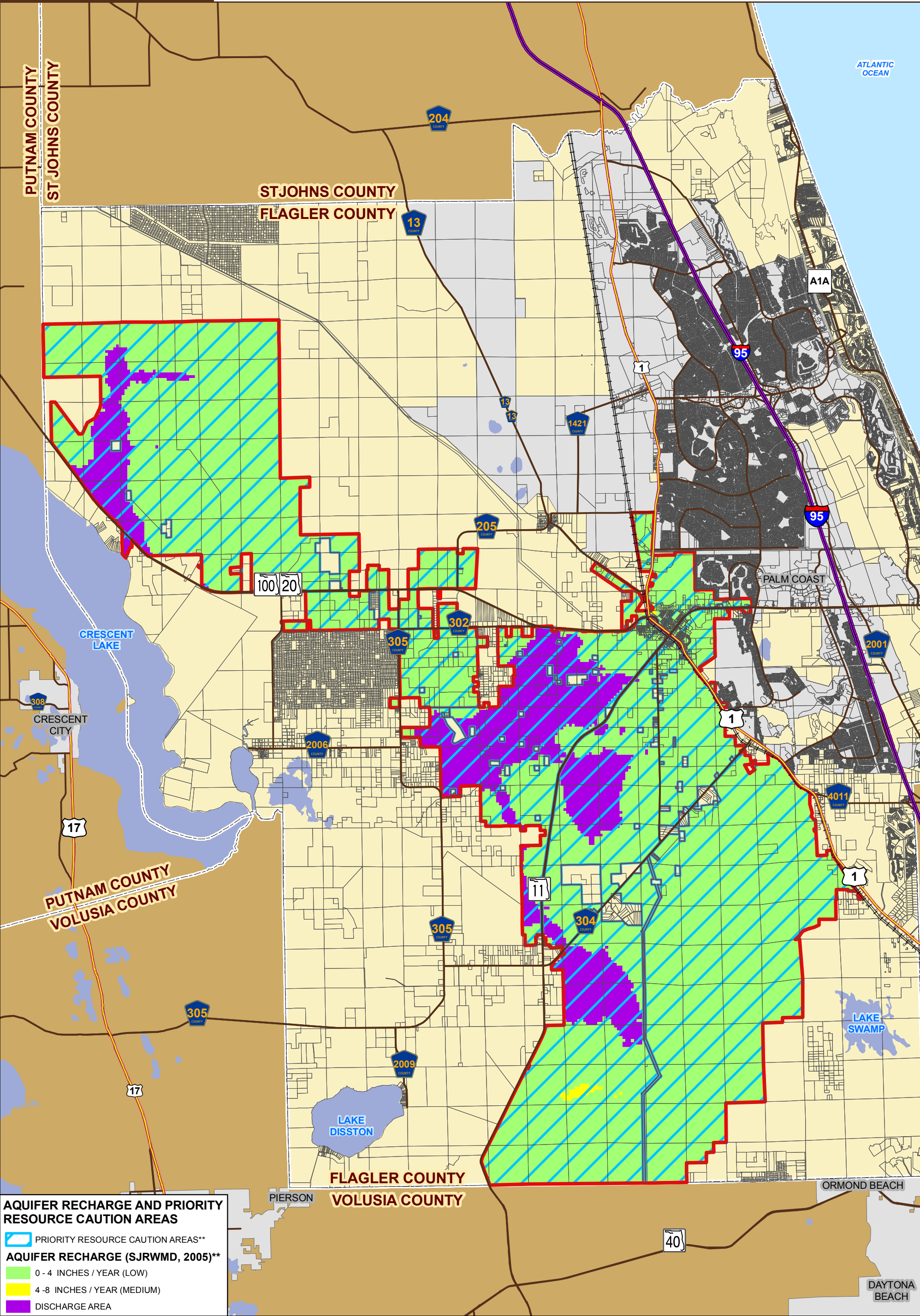
LEGEND

- | | | |
|--|----------------|------------------------|
| CITY OF BUNNELL
MUNICIPAL LIMITS
(JUNE, 2011)* | INTERSTATES | MAJOR HYDROLOGY |
| US HIGHWAYS | CITIES | FLAGLER COUNTY PARCELS |
| MAJOR ROADS | FLAGLER COUNTY | FLORIDA COUNTIES |
| ACTIVE RAILWAY | | |

THIS MAP WAS CREATED FROM & REPRESENTS THE BEST AVAILABLE DATA.
*BOUNDARY LINES WERE DIGITIZED FROM A MAP PROVIDED BY THE CITY OF BUNNELL & UPDATED TO INCLUDE RECENT ANNEXATION PARCELS.
**RECHARGE & PRIORITY RESOURCE CAUTION AREAS SOURCED FROM THE ST JOHNS RIVER WATER MANAGEMENT DISTRICT.



DATA SOURCES: CITY OF BUNNELL,
FLAGLER COUNTY PA, SJRWMD,
FDOT, NHPN, FDEP, FGDL, ESRI.
ACREAGES ARE APPROXIMATE & GIS DERIVED.
DATA IS PROVIDED "AS IS". VLM



AQUIFER RECHARGE AND PRIORITY
RESOURCE CAUTION AREAS

- PRIORITY RESOURCE CAUTION AREAS**
- AQUIFER RECHARGE (SJRWMD, 2005)****
- 0 - 4 INCHES / YEAR (LOW)
 - 4 - 8 INCHES / YEAR (MEDIUM)
 - DISCHARGE AREA