



The Crossroads of Flagler County

From strategic location with vast land mass,
to world-class staff,
and a myriad of opportunities for residents,
visitors and investors,
Bunnell is the ideal place for prosperity!

Always Bunnell



Towards its Centennial and Beyond...



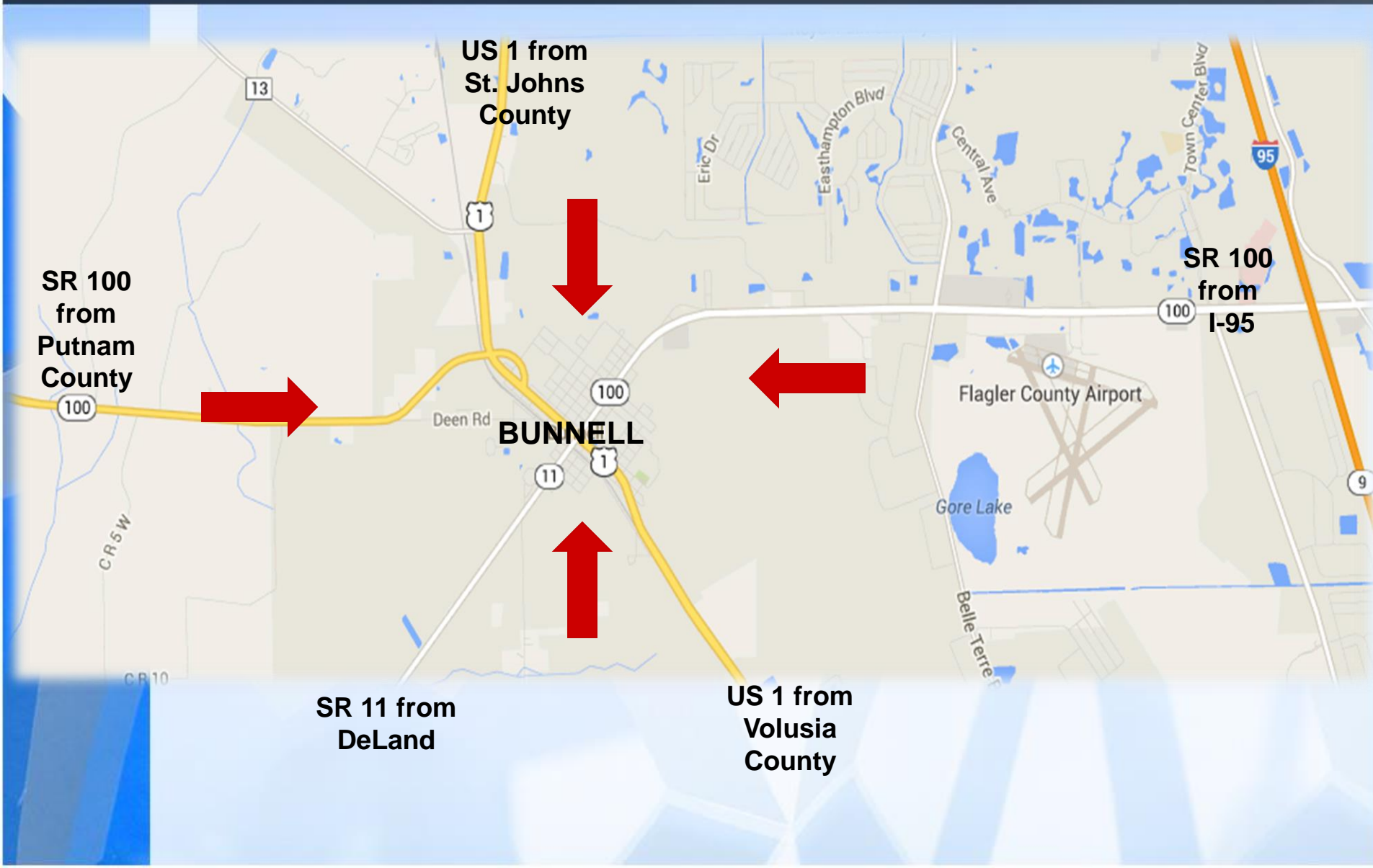
Forever Bunnell



www.bunnellcity.us



ALL ROADS LEAD TO BUNNELL



CITY OF BUNNELL
MUNICIPAL LIMITS
FLAGLER COUNTY, FL

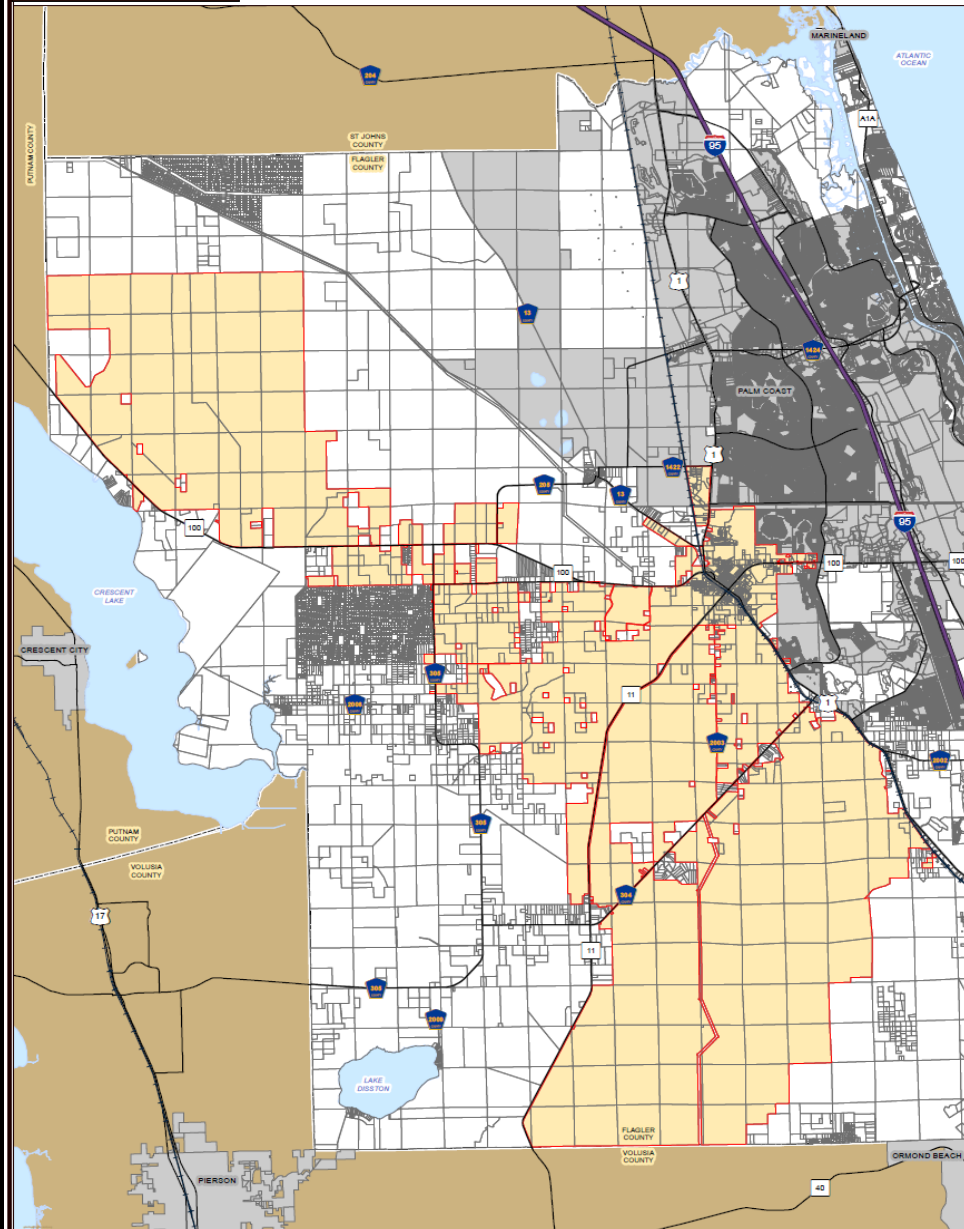


LEGEND

- | | | |
|------------------|-------------|------------------------|
| CITY OF BUNNELL | INTERSTATES | MAJOR HYDROLOGY |
| MUNICIPAL LIMIT | MAJOR ROADS | CITIES |
| MAPDATE 2013 JAN | RAILROAD | FLAGLER COUNTY PARCELS |
| | | FLORIDA COUNTIES |



DATA SOURCES: CITY OF BUNNELL
FLAGLER COUNTY EMERGENCY SERVICES
FLAGLER COUNTY EMERGENCY SERVICES
FLOOD FOOT PRINT FROM FIRM, FIRM
ACREAGES ARE APPROXIMATE & GIS DERIVED
GAIN IS PROVIDED AS IS



This product is for information purposes and may not have been prepared for or be suitable for legal, engineering, or surveying purposes. Users of this information should review or consult the primary data and information sources to determine the quality of the information.
BunnellCity.org 20130125 7x17









PLANNING AND ECONOMIC DEVELOPMENT FOR THE CITY OF BUNNELL

STOR- IT STORAGE



O'REILLY'S AUTO PARTS



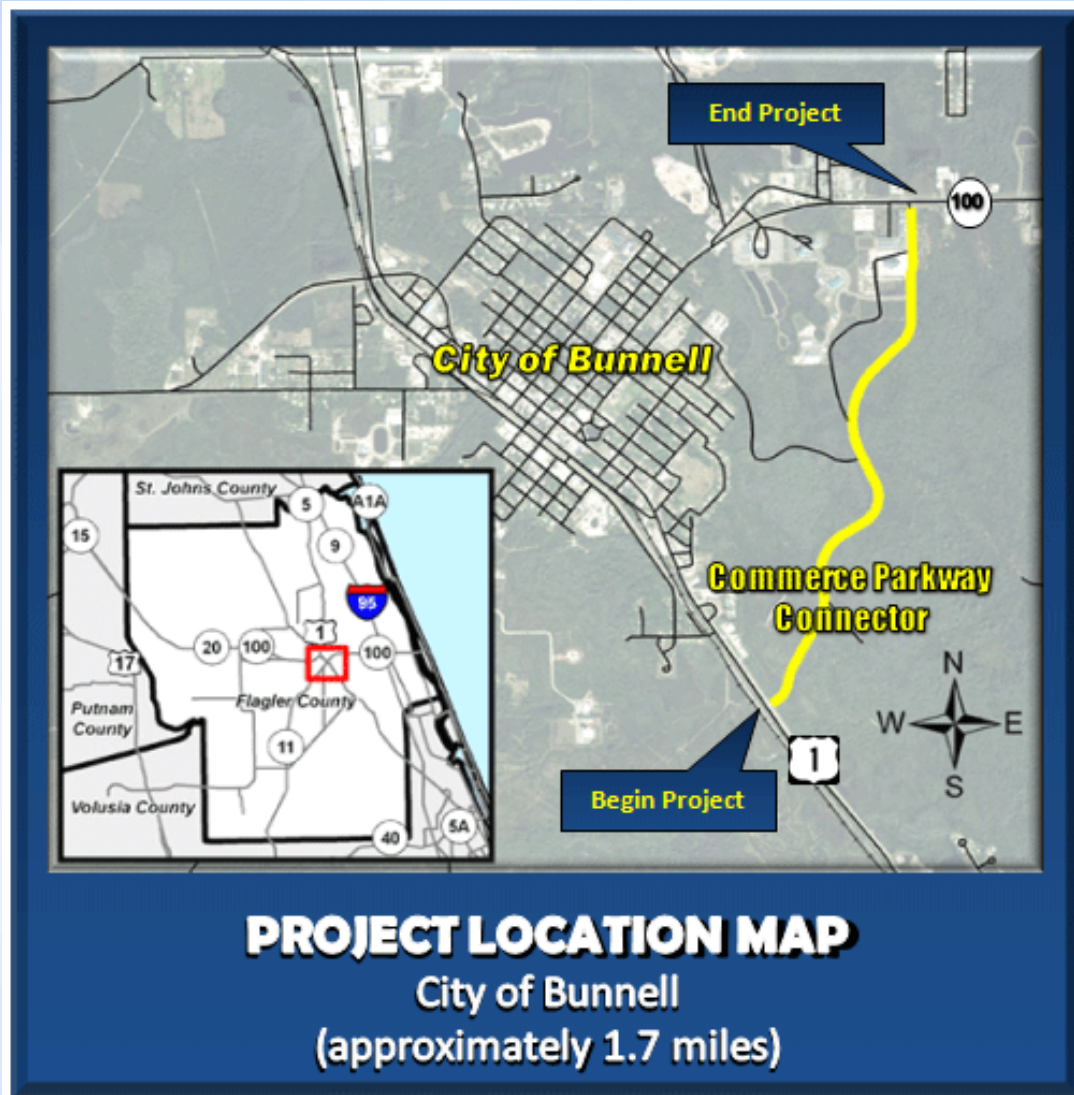
PIT STOP PIZZA



GEA AUTO SALES & REPAIRS



FLAGLER CENTRAL COMMERCE PARKWAY



DOLLAR GENERAL



NEW BUSINESS- Bright House



FAMILY DOLLAR





- Impact fee moratorium
- Expedited permitting process
- Low permit fees



INVESTMENTS

BUNNELL WATER TREATMENT PLANT 6 MILLION DOLLAR UPGRADE



WATER TREATMENT PLANT ION EXCHANGE

NORTHEAST DISTRICT
RECEIVED
2012 NOV 29 PM 4:28

FOR



PROJECT
LOCATION



CATHERINE D. ROBINSON - MAYOR
JENNY CRAIN-BRADY - VICE MAYOR

JOHN ROGERS - COMMISSIONER
DAISY M. HENRY - COMMISSIONER
ELBERT TUCKER - COMMISSIONER

LOCATION MAP

000000-007-MC JUN 21, 2012
FDD PERMIT NUMBER 10.1



MCKIM & CREED

158 Cypress Point Parkway, Suite C214
Dunn, Florida 32834
Phone: (360)240-6300 Fax: (360)240-9323
E:info@mc.com

www.mckimcreed.com

PHILIP V. LOREL, P.E.
REGISTERED PROFESSIONAL ENGINEER
STATE OF FLORIDA

90% SUBMITTAL

WATER TREATMENT PLANT ION EXCHANGE

CITY OF BUNNELL 1671-0070

MCKIM AND CREED - PALLI COULET ELCOR

NEW CITY HALL



CARVER SPORTS COMPLEX



10/14/2014

US 1 / MOODY BLVD. LANDSCAPING PROJECT



US 1 / MOODY BLVD. SIDEWALK PROJECT



STORM WATER MASTER PLAN



Still in initial stages

GRANT APPLICATIONS



Community Development Block Grant (CDBG)



Florida Recreation Development Assistance Program (FRDAP)

MUNICIPAL PARK





EVENTS

FL.ROC RUNS



Bi-annual FL.Roc
Obstacle Course
Event on the
Strickland Property
in Favoretta

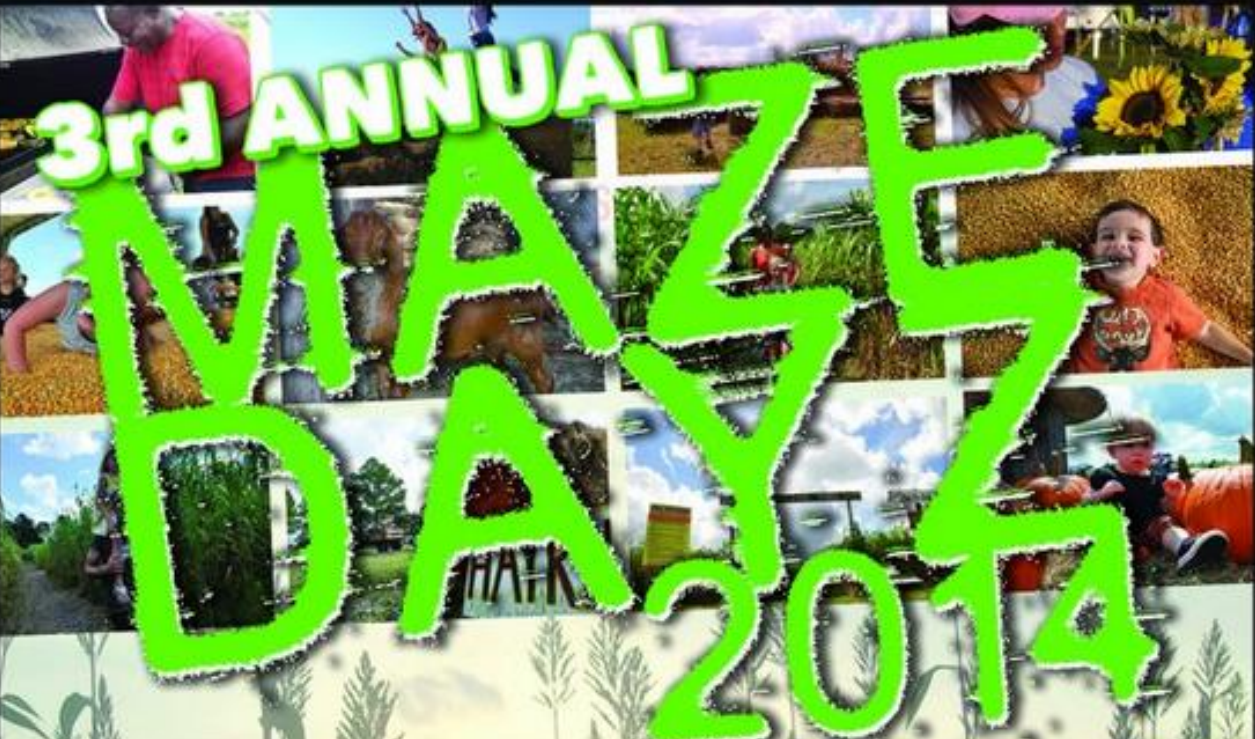
FL.ROC' N FESTIVAL

LOCATION:

Cemetary Road
Bunnell, FL 32110
[Google Maps link](#)



COWART CORN MAZE



**3rd ANNUAL
MAZE
DAY
2014**

Every Fri., Sat., Sun. from Oct. 3rd - Nov. 2nd
5-10pm Fri. | 10am-10pm Sat. | 11am-7pm Sun.
at Cowart Ranch & Farms, 7 miles west of Bunnell | West Hwy 100

MUD MUCKERS



11,000 ACRES **WORLDS LARGEST OFF-ROAD FAMILY MUD PARK** **11,000 ACRES**

Mud Muckers **.com**

BUNNELL, FL

FOLLOW US ON...

f **t** **You Tube**

2008 E CR 90, Bunnell, FL 32110 **Phone: 386.566.1456**

2008 E CR 90, Bunnell, FL 32110



OPPORTUNITIES

COLLABORATION WITH SURROUNDING JURISDICTIONS



- Participation in the TPO
- Bunnell Elementary Trails to Joann B. King Park(partnered with Flagler County)
- Beautification of East Moody Blvd. to Belle Terre Pkwy. (partnered with Flagler County)

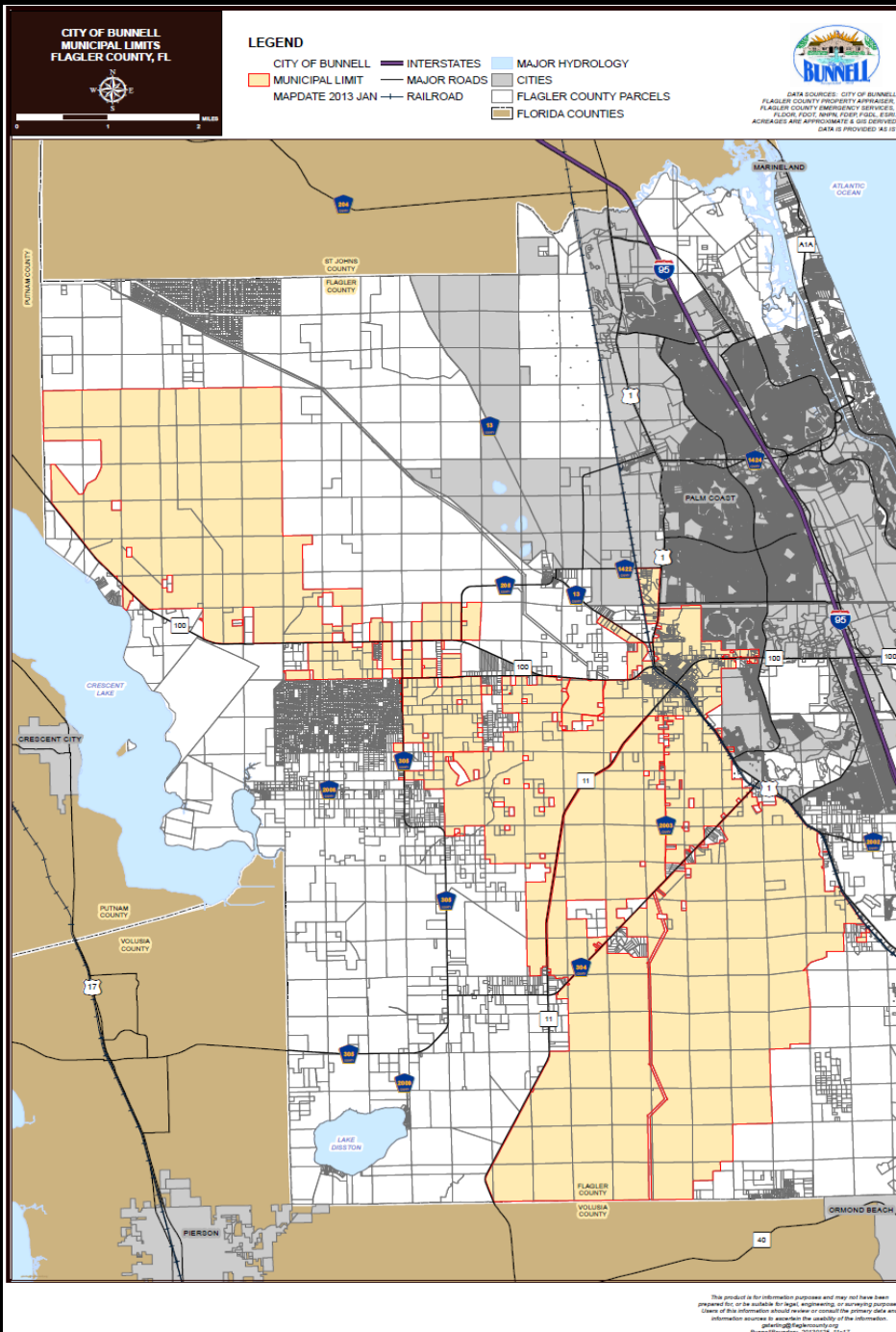


WORKING TOWARDS THE FUTURE



- Revitalizing infrastructure
- Downtown streetscape
- Community Redevelopment
- Passenger Railroad Depot
- Rail siding
- Intersection relief





A tale of two cities

Questions & Comments



It's QUESTION TIME !!